

MV "REM CETUS"

SHIP DESIGN
CLASSIFICATION
BUILDER
PORT OF REGISTRY
FLAG
MMSI
IMO NUMBER
DELIVERY
CALL SIGN

VS 485 MK III
BUREAU VERITAS
FJELLSTRAND AS, NO 1687
NASSAU
BAHAMAS
311000082
9644342
JANUARY 2013
C6AL7

OWNER: Rem Offshore AS
REGISTERED OWNER: Rem PSV AS

MANAGER: Rem Maritime AS
N-6090 Fosnavåg

MAIN DIMENSIONS

LENGTH O.A	85.60m
LENGTH P.P	77.70m
BREADTH	20.00m
MAX DRAFT	7.14m
GROSS TONNAGE	4,552mt
NET TONNAGE	1,839mt
DEADWEIGHT	5,476mt
LIGHTWEIGHT	3,250mt

CLASS NOTATIONS

OIL RECOVERY SUPPLY VESSEL -OIL PRODUCT,
UNRESTRICTED NAVIGATION
COMF-NOISE 3 COMF-VIB 3,
CPS(WBT), AUT-UMS,
SYS-NEQ-OSV, CLEANSHIP SUPER,
ICE, DYNAPOS AM/AT R,
SDS, NOFO 2009
ERN 99.99.99.99, NOFO 2009



OUTLINE SPECIFICATION

MACHINERY AND PROPELLER PLANTS

Main Engines/Gen.:	4x 1,665kW Wartsila 9L20
Emergency Generator:	1x 175kW Volvo Penta
Main Propulsion:	2x 2,300kW f. pitch propellers
FWD Azimuth:	1x 880kW Brunvoll
FWD Tunnel Thrusters:	2x 1,000kW Brunvoll

CARGO CAPACITIES NOFO 2009

Deck Cargo:	2,800mt
Deck Area:	1,004m ² , 59.8m x 16.8m free space
Deck Strength:	10mt/m ²
Fuel Oil:	897m ³
Liquid Mud (SG 2.8):	695m ³ , Agitators in all tanks
Brine (SG 2.5):	418m ³
Base Oil:	203m ³
Pot Water:	1,050m ³
Drill Water/Ballast:	2,629m ³
Methanol:	146m ³
Special Product:	146m ³
Slop:	2x 90m ³
ORO:	1,808m ³
Cement/Barite/Bentonit:	330m ³

ENVIRONMENT AND CARGO CONTROL PLANTS

Incinerator:	Ulmatec Pyro
Cement plant:	Van Aalst
All pumps:	Ing. Per Gjerdrum
Electrical Boiler:	Parat Halvorsen AS
Equipment on deck:	Norwegian Deck Mach AS
Tank Cleaning:	Per Gjerdrum AS
Special Cargo Tanks:	Stainless Steel Tanks for Methanol
Inert Gas System:	Wilhelmsen N2 Generator
Cargo Manifolds:	Midship SB&PS and Aft

NAVIGATION

Bridge Consoles:	Steinsvik Aft, Fwd and both Wings
Oper. Control Office:	Located on Bridge
Autopilot:	Simrad AP 50
DP System:	Kongsberg K Pos DP 2
Joystick System:	Kongsberg C-Joy Constant
DP Motion System 1:	Seatex MRU 2
DP Motion System 1:	Seatex MRU 5
Fanbeam:	Kongsberg Lazer Mk 4,2
DGPS:	2x Furuno GP 150
RADIUS:	1x Radius 1000 Kongsberg
Wind Sensor:	2x Kongsberg Maritime
Radar 1:	1x 10 cm/ S band, IMO ARPA
Radar 2:	1x 3 cm/ X band w/mini ARPA
Oil Radar:	According to NOFO Standard 2009
Echo Sounder:	Furuno FE 700
Gyro:	3x Simrad GC 80
Speed Repeater:	Skipper IR 300
VDR:	Furuno VR 3000
GPS:	2x Furuno GP 150
Bridge Watch:	VICO system NAUT/OSV
ECDIS:	Furuno Tecdis T - 2137
Speed log:	Skipper EML 224

INDICATIVE SPEED & FUEL CONSUMPTION

Full speed:	14.0 knots, 13,0 mt/d
Service speed:	12.5 knots, 10.0 mt/d
Economic speed:	11.0 knots, 7.3 mt/d
DP operation:	5.3 mt/d at position keeping 1.6m Hs
St-by at field:	2.9 mt/d at one engine
Harbour mode:	2.0 mt/d

CARGO HANDLING EQUIPMENT

1x Cargotec kn. crane	SWL 5.0mt/15m
2x Nor. Deck Mach AS	10mt capstans aft
1x Nor. Deck Mach AS	10mt capstan
6x Nor. Deck Mach AS	cargo securing winches
1x Nor. Deck Mach AS	Tugger Winch

LIFE SAVING EQUIPMENT

Ship Certificate:	22 persons
Life Rafts:	Capacity 22 persons, each side
MOB:	Norsafe Rescue/MOB boat(28ft) for min 10 persons
MOB Davit:	Cargotec SOLAS approved
Survival Suits:	3x Full dry insulated Survival suits according to rules

COMMUNICATION

Navtex:	Furuno NX-700 B
Radar Transponder:	2x Jotron Tron SART
DSC Terminal:	Furuno FS-2570 C
AIS:	Furuno FA 150
EPIRB manual:	Jotron 45 SX
EPIRB Free Float:	Jotron Tron 40 S Mk II
Radio Station:	SSB, MF, HF, Furuno FS-2570 C
VHF Portable:	3x Jotron Tron TR 20 GMDSS
VHF Station:	Furuno FM-8800 S
UHF Portable:	5x Motorola GP 340
Inmarsat C:	Furuno Felcom 15
Intercom:	Zenitel ACM 144 66/VO
Sound System:	Vingtor VSS 111
Emergency:	Vingtor VSP 211 L
PA System:	Zenitel VPA 120, 240 and 400

Sat. Communication:	+47 21 03 81 64
Mobile Phone UK:	+44 78 11 50 00 34
Vessel E-Mail:	captain@cetus.remoffshore.no

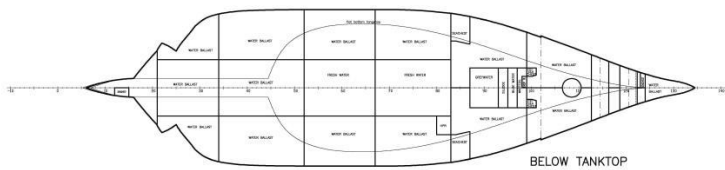
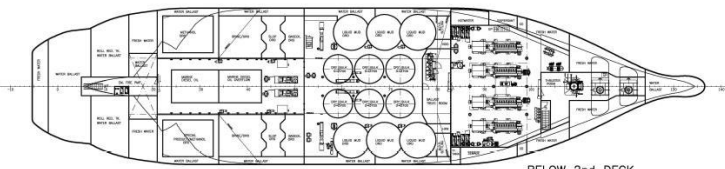
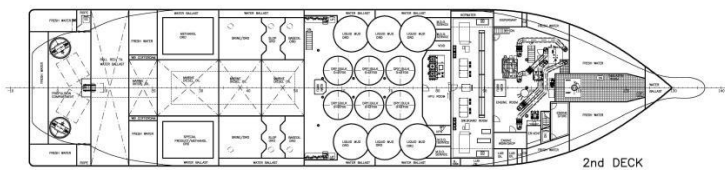
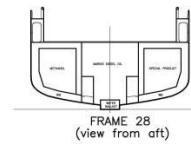
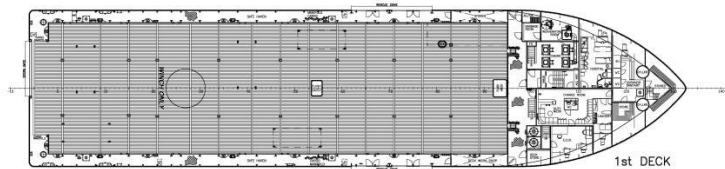
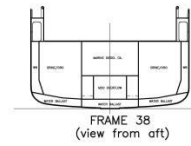
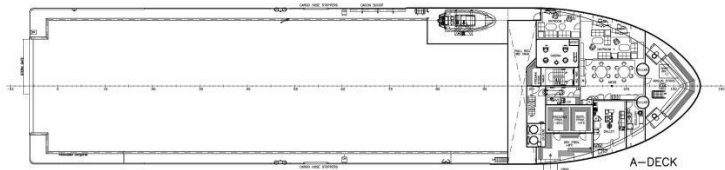
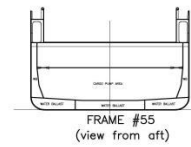
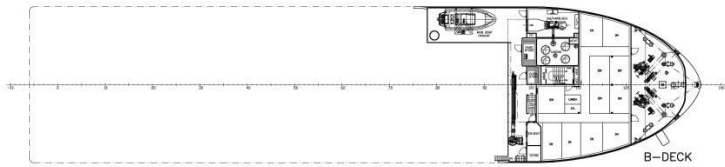
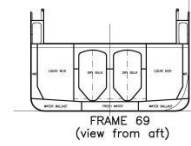
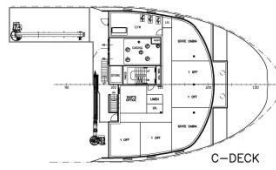
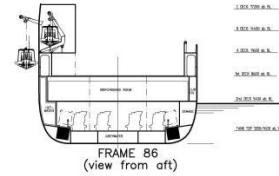
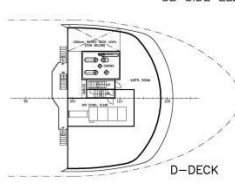
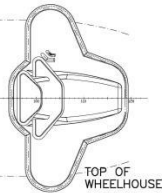
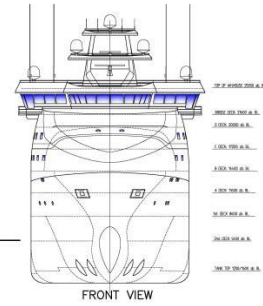
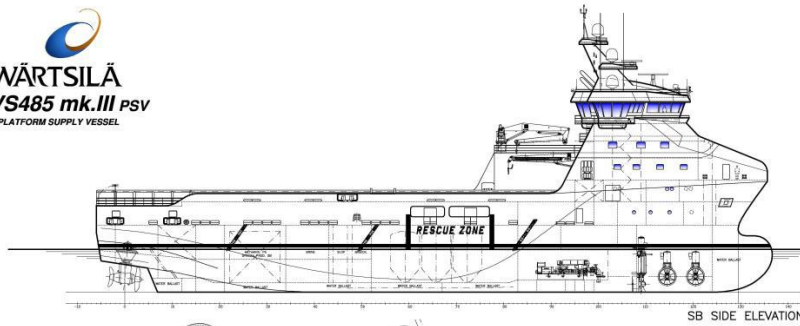
ACCOMMODATION

Outfitted for 22 persons in spacious and comfortable facilities.	
Single Cabins:	12 with bathrooms
Double Cabins:	5 with bathrooms
Hospital:	1 Highest standard
Office:	1 fully outfitted
Day Room:	2 comfortably outfitted
Gymnasium:	1 fully outfitted
Entertainment:	In Day Rooms and all Cabins
Antiroll Tank:	1x Tank aft below 1st deck 1x Tank between A- and B-deck

WÄRTSILÄ

VS485 mk.III psv

 PLATFORM SUPPLY VESSEL



27.000 200 A.S.
 26.000 200 A.S.
 1.000 200 A.S.
 1.000 200 A.S.
 1.000 200 A.S.
 1.000 200 A.S.
 1.000 200 A.S.
 1.000 200 A.S.
 1.000 200 A.S.
 1.000 200 A.S.

1.000 200 A.S.
 1.000 200 A.S.
 1.000 200 A.S.
 1.000 200 A.S.
 1.000 200 A.S.

1.000 200 A.S.
 1.000 200 A.S.
 1.000 200 A.S.
 1.000 200 A.S.

1.000 200 A.S.
 1.000 200 A.S.
 1.000 200 A.S.

1.000 200 A.S.
 1.000 200 A.S.
 1.000 200 A.S.

1.000 200 A.S.
 1.000 200 A.S.
 1.000 200 A.S.

CABIN PLAN

	In	Half	In	2nd	TOTAL
	Cabins	Cabins	Cabins	Cabins	Cabins
C-DECK:	6	0	0	0	6
B-DECK:	6	1	0	0	7
TOTAL:	12	1	0	0	13

PRINCIPAL PARTICULARS:

LENGTH O.A. (INCL. BULB):	85.60 m
LENGTH BETW. PERP.:	77.70 m
BREADTH:	22.00 m
DEPTH TO 1st DECK:	8.60 m
DEPTH TO 2nd DECK:	5.40 m
DECK AREA:	1000 m ²
FRAME SPACING:	600 mm

PLATFORM SUPPLY VESSEL		GENERAL ARRANGEMENT	
VS485 PSV mk.III		1:200	101
WÄRTSILÄ		4436	101-001



"Details believed to be correct and given in good faith, but without guarantee"

