

MV "REM ENERGY"

**SHIP DESIGN
CLASSIFICATION**

Havyard 833 CSV
DNV

**BUILDER
PORT OF REGISTRY**

Green Yard Kleven
FOSNAVAAG

FLAG

NIS

MMSI

257769000

IMO NUMBER

9740732

DELIVERY

2021

OWNER:

Rem Offshore AS

MANAGER:

Rem Maritime AS

REGISTERED OWNER:

Rem Energy AS

N-6090 Fosnavåg

MAIN DIMENSIONS

LENGTH O.A	89.7m
LENGTH P.P	76.2m
BREADTH	19.6m
MAX DRAFT	6.00m
AIR DRAFT	34.5m
GROSS TONNAGE	5999mt
NET TONNAGE	1800mt
DEADWEIGHT	2487mt
LIGHTWEIGHT	4248mt

CLASS NOTATIONS

DNV 1A1 BIS Battery (Power) BWM(T) Clean
(Design) COMF (C-3, V-3) DYNPOS(AUTR) E0
NAUT(OSV(A)) Recyclable SF SPS





OUTLINE SPECIFICATION

MACHINERY AND PROPELLER PLANTS

Main Engines:	5x 1350 kW Cat. 3512C
Emergency Generator:	1x 230 kW Caterpillar C9
Battery pack:	Corvus Orca 2 x 341kWh
Main Propulsion:	2x 2,100 kW Steerprop SP 35 CRP
Azimuth:	1x 880kW Brunvoll AR-63-LNC-1650
Bow tunnel thruster:	2x 1200 Brunvoll FU-80-LTC-2250

CAPACITIES*

A Deck container capacity:	8 x 20' containers
A Deck wooden dunnage area:	70 m ²
A Deck strength:	3mt / m ²
A to Main Deck hatch covers:	2 x Flush type, 3mt/ m ²
Main Deck sheltered area:	4 x 20' + 2 x 10' containers
Main Deck containers handling:	2 x 10t Tuggers, rail sliding system.
Fuel Oil:	770 m ³
Fresh Water:	570 m ³
Water Ballast:	2513 m ³

LIFE SAVING EQUIPMENT

Ship Certificate:	99 persons
Life Rafts:	2 x 25 pax
MOB boat:	MARE FRB700, 15 pax
MOB Davit:	REDROCK RDT36
Survival Suits:	4 x Full dry insulated

ENVIRONMENT AND CARGO CONTROL PLANTS

All pumps:	Ing. Per Gjerdrum AS
Hot water Boiler:	Pyro AS/1200w/2200ltrs
Equipment on deck:	ODIM Brattvaag AS

NAVIGATION

DP System:	Kongsberg K Pos DP-21/K Master
Joystick System:	Kongsberg DP Cjoy
DP Motion System:	1x MGC-R2, 2 xMGC-R1
Speedlog:	1x JRC 740N
Scenescan:	1x Wartsila Guidance Marine Ltd
DGPS:	1x DPSi2 Seatex, 1x DPSi4 Seatex
Wind Gauge:	3x Wind Observer II Ultrasonic
Radar 1:	1x JRC NKE-2632 S-band
Radar 2:	1x JRC X-Band
Wave Radar:	1x Rutter Sigma S6 Wamos II
Echo Sounder:	SKIPPER ESN100
Gyro:	1x MGC-R2 , 2 x MGC-R1
VDR:	JRC JCY-1900
GPS:	2x JRC 7800; NWZ4740
ECDIS:	Raven INS
Autopilot:	1x Raven INS

ANTI ROLLING TANKS

RR 36 WBT:	152 m ³ /tween deck
RR 37 WBT:	134 m ³ /tween deck
RR 59 WBT:	164 m ³ / C deck

INDICATIVE SPEED & FUEL CONSUMPTION

Full 4200kw/100%:	15.0 knots, 28.8 m ³ / d
At 2100kw/50%:	12,1 knots, 17,4 m ³ /d
Economic speed:	9.6 knots, 10,1 m ³ / d
DP operation:	6,9 m ³ /d at position keeping
St-by at field:	2,9 m ³ /d at one engine
Harbour mode:	1,9 m ³ /d

CARGO HANDLING EQUIPMENT

Offshore crane SMST MCC:	3D Knuckle boom
SWL Motion compensated:	2.0mt at 24.5m
SWL Harbour single fall:	5.0mt at 25.5m
SWL Harbour double fall:	10.0mt at 19.5m
Provision crane:	TTS GPK 150-5-18
SWL:	5.0mt at 18.0m
Auxiliary Offshore Crane (CTV):	Palfinger PKM350
SWL Harbour:	2.3mt at 15m
SWL Deck lift offshore:	2.0mt at 15m
SWL Ship to Ship:	0.95mt at 15m

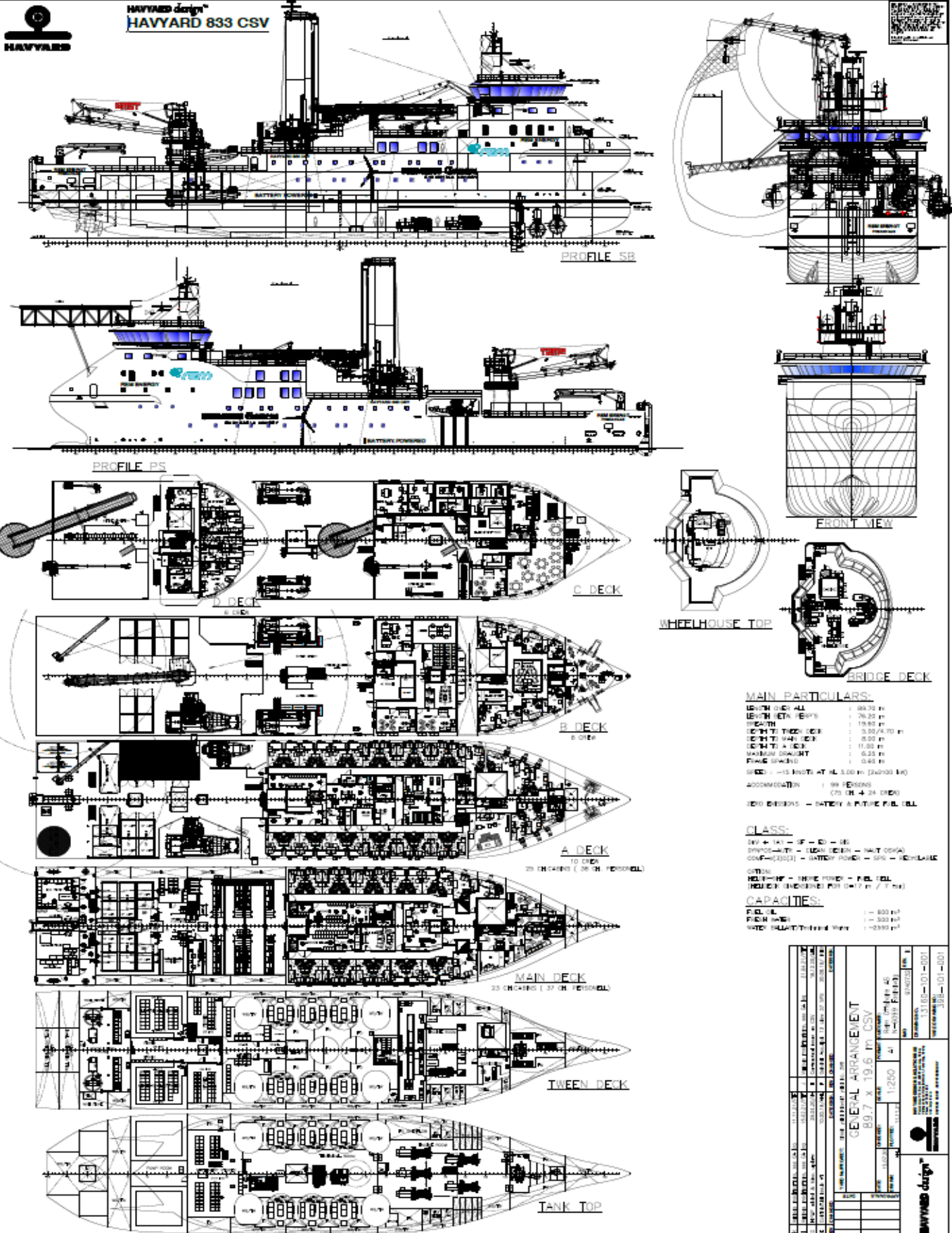
Mooring Winch:	2x 8.0 mt
Windlass:	2x 18 mt
Capstan:	2x 10 mt
Tugger Winch PS/ SB:	2x 10/15 mt PS/SB

COMMUNICATION

Navtex:	JRC NCR333
Radar Transponder:	2x Jotron Tron SART20
EPIRB manual:	Jotron Tron 60S/GPS
EPIRB Free Float:	Jotron Tron 40S MK2
VHF (Emerg) Portable:	3x Jotron Tron TR30 GMDSS
VHF Station:	2x JRC JHS 800S
VHF Station:	3x Sailor 6248 VHF
VHF Station:	4x Sailor SP3530
UHF Portable:	9x Motorola DP4401 EX
Inmarsat C:	2x JRC JUE-87
Intercom:	Stenfon IP Alphacom
Sound System:	Phontech 8300 MK2
PA System:	Vingtor SPA-M6D
Sat. Communication:	+ 47 42 57 76 91 0
Mobile Phone UK:	+ 47 51 22 90 72
Vessel E- Mail:	captain@energy.remoffshore.no

ACCOMMODATION

Total bunks capacity:	99 / 75 client+24 crew
Single Cabins:	21 Clients / 16 Crew
Double Cabins:	27 Clients / 4 Crew
Hospital:	1 High standard
Client Office:	4 fully outfitted
Day Room:	Day Room:
Gymnasium:	1 fully outfitted
Baze port entertainment system:	In Day Rooms and all Cabins



MAIN PARTICULARS:

LENGTH OVER ALL	188.75 m
LENGTH BETA DECK	76.25 m
DEPTH	19.82 m
DEPTH TO TWEEN DECK	9.00 (+0.70) m
DEPTH TO MAIN DECK	8.00 m
DEPTH TO A DECK	11.00 m
MAXIMUM DRAUGHT	9.25 m
POWER (SHEKTS)	0.44 m
SIZE	-15 knots AT HL 5.00 m (24000 kW)
ACCOMMODATION	199 PERSONS (75 CH + 24 DECK)
DECK DECKS	- BATTERY & PAPER PULP CELL

CLASS:

DEY + (A) - (F) - (E) - (S)
 DYNOS-AUT - (LEAN DECK) - NAUT (DCA)
 DCA-F-(2)(3)(4) - BATTERY POWER - SHS - SECURAGE

OPTION:
 HELICOPT - SHORE POWER - PULP CELL
 (HEAVY) (SHEKTS) PULP (0-12 m / 3 m)

CAPACITIES:

PULP CELL	1 - 800 m³
PULP SHKTS	1 - 500 m³
WATER TREATMENT	1 - 3500 m³

GENERAL ARRANGEMENT		89.7 x 19.6 m CSV	
DESIGN NO.	12850	DATE	15.07.15
SCALE	1:1250	BY	J.P.A.
REV.		CHECKED	N-6090
NO.		DATE	04/03/15
REVISIONS 131.001-101-001 131.001-101-001 131.001-101-001			



***All tank capacities are 100% of net. volume**

"Details believed to be correct and given in good faith, but without guarantee"

